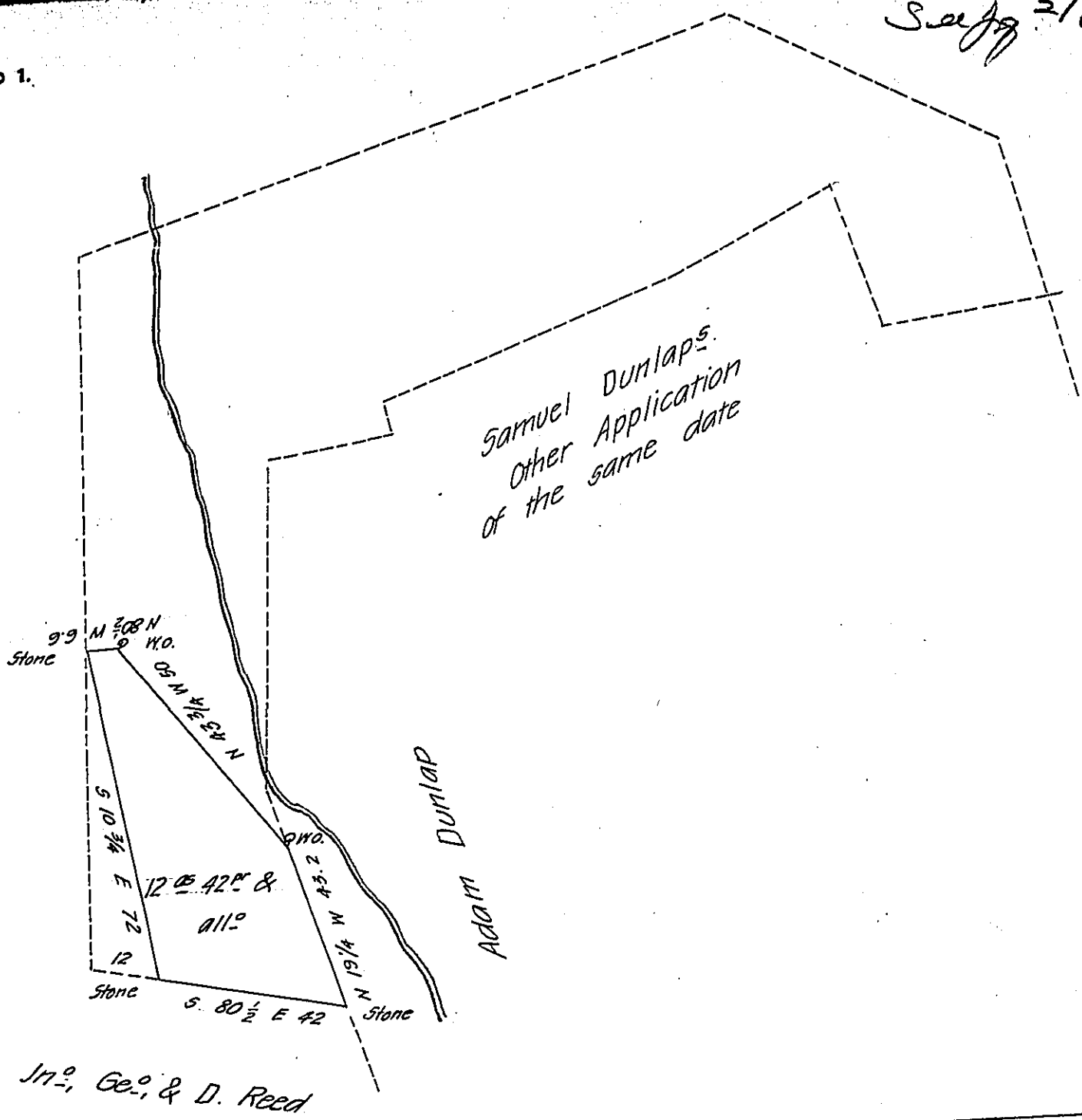


See pg 274
275



The above draught made with the black lines contain 12 acres
42 perches and the usual allowance of six per Cent for Roads &c. Situated
in Bart township Lancaster County and is the S.W. part of 87^{as} 27^{pr} Sur-
veyed in pursuance of the application of Samuel Dunlap to the Land Office
on the 5th day of February 1768 and now Resurveyed April 20th 1836

By
James Caldwell D.S.
To Jacob Spangler Esq^r
Surveyor General Penn^a

IN TESTIMONY that the above is a copy of the original remaining on file in
the Department of Internal Affairs of Pennsylvania, made
conformably to an Act of Assembly approved the 16th day of
February, 1833, I have hereunto set my Hand and caused
the Seal of said Department to be affixed at Harrisburg,
this twenty eighth day of May 1908

Henry Hower
Secretary of Internal Affairs.